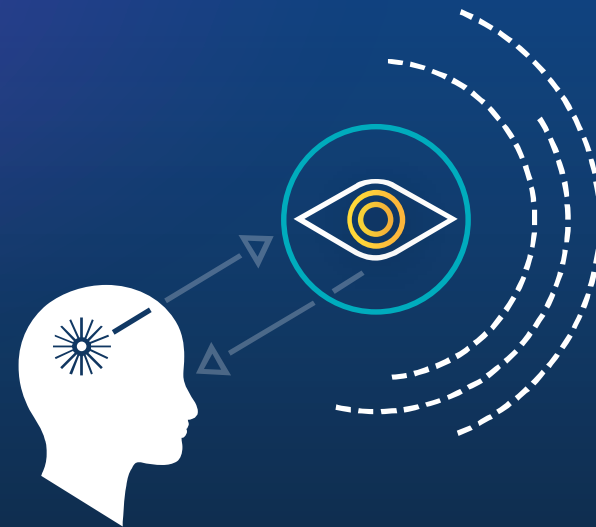




Qualcomm Technologies, Inc.
March 2016

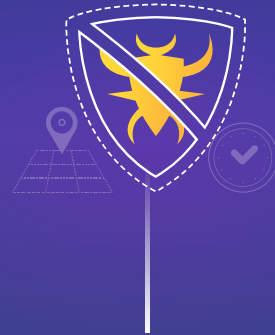
Mobile Security Solution



Increasing privacy and security concerns

Malware Attacks

- Proliferation of malware
- Challenging malicious attacks
- Timely detection of new and unknown malware attacks



Authentication Issues

- Passwords are not working
- Current biometric challenges, e.g. spoofing and consistency
- Device credibility/reputation



Privacy Concerns

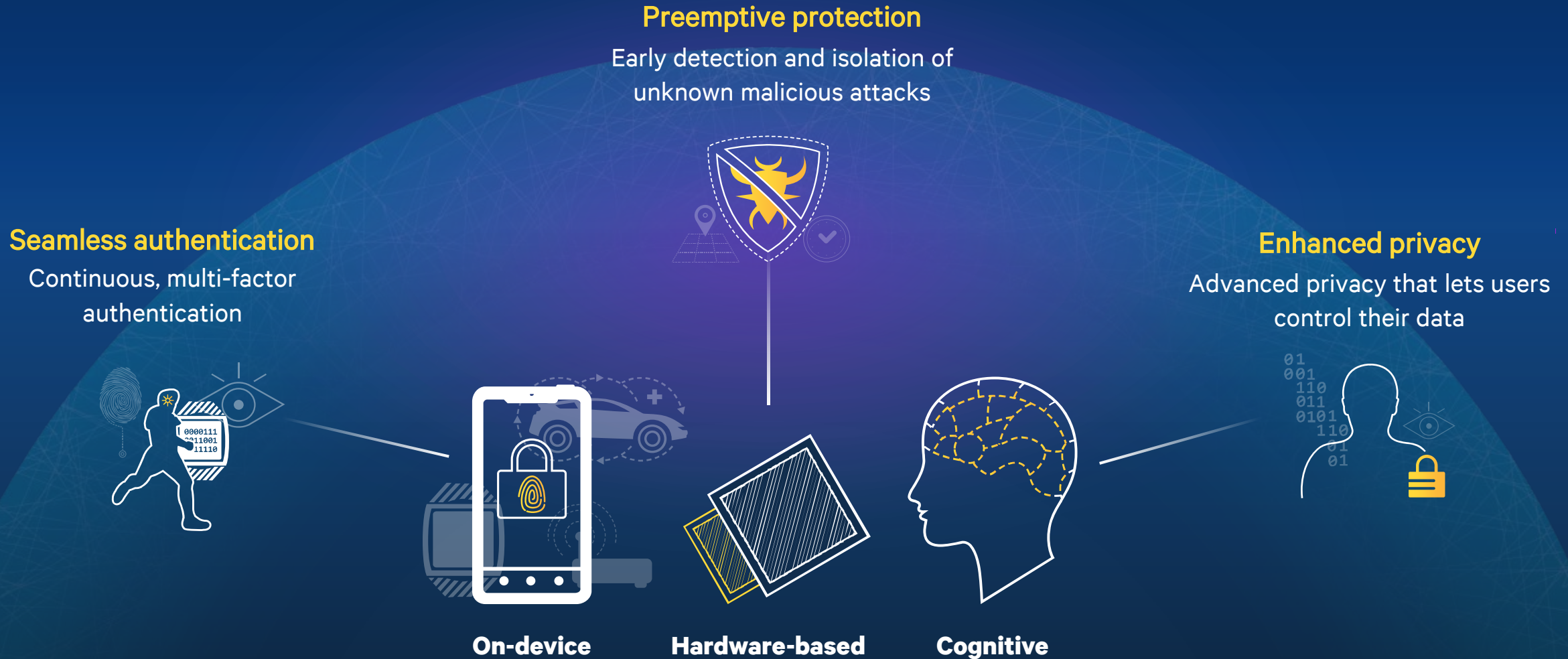
- User control of personal data
- Lack of transparency
- Stolen personal data



An unprecedented number of intelligent, connected things

A vision for seamless and preemptive security

Enhancing security and privacy, while providing convenient user experience



On-device processing is key for security and privacy

User privacy

Ability to enjoy services without the need to upload sensitive personal data to the cloud

Always-on protection

Ability to deal with zero-day malware and phishing attacks

Critical data protection

On-device storage of keys and biometric data

Personalized security

Adapting to device capabilities and user preferences



On-device

Hardware-based security is the foundation

Security embedded into the silicon and firmware

Enhanced security

Ensuring overall system security and device health

Rich user experience

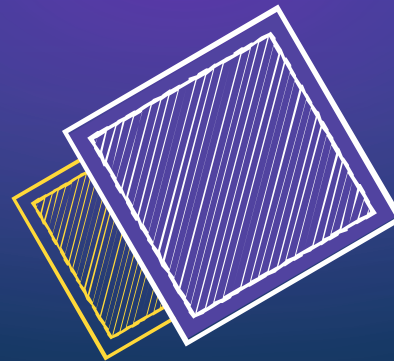
Providing unobtrusive, efficient solutions

Extensible platform

Providing security services through open standards

HW firewall to isolate security functions from HLOS

HW cryptography engines



Secure execution environment

Robust storage of keys

Detection of rootkits* and malware

Hardware-based security

* Malicious code that gains low level access and remains hidden from apps and OS

Cognitive technologies support better Security

By applying behavioral analysis

Behavioral classification

Classifies device and user activity based on pre-defined behavior models

Behavioral observation

Monitors device software activities, as well as apps and user behaviors

Actuation

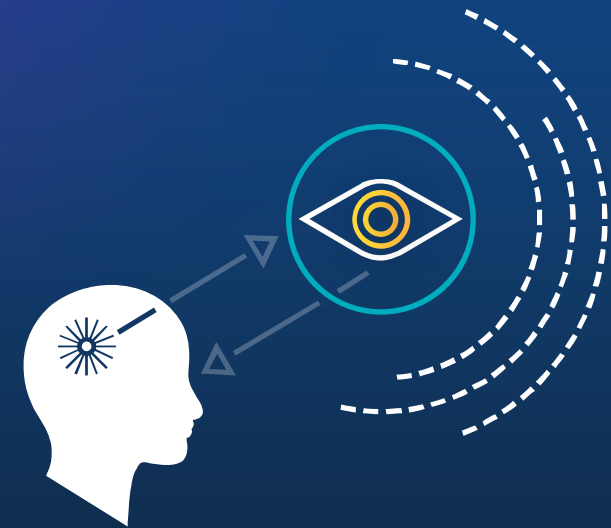
Takes intuitive actions to enable robust and convenient security

Learns and adapts



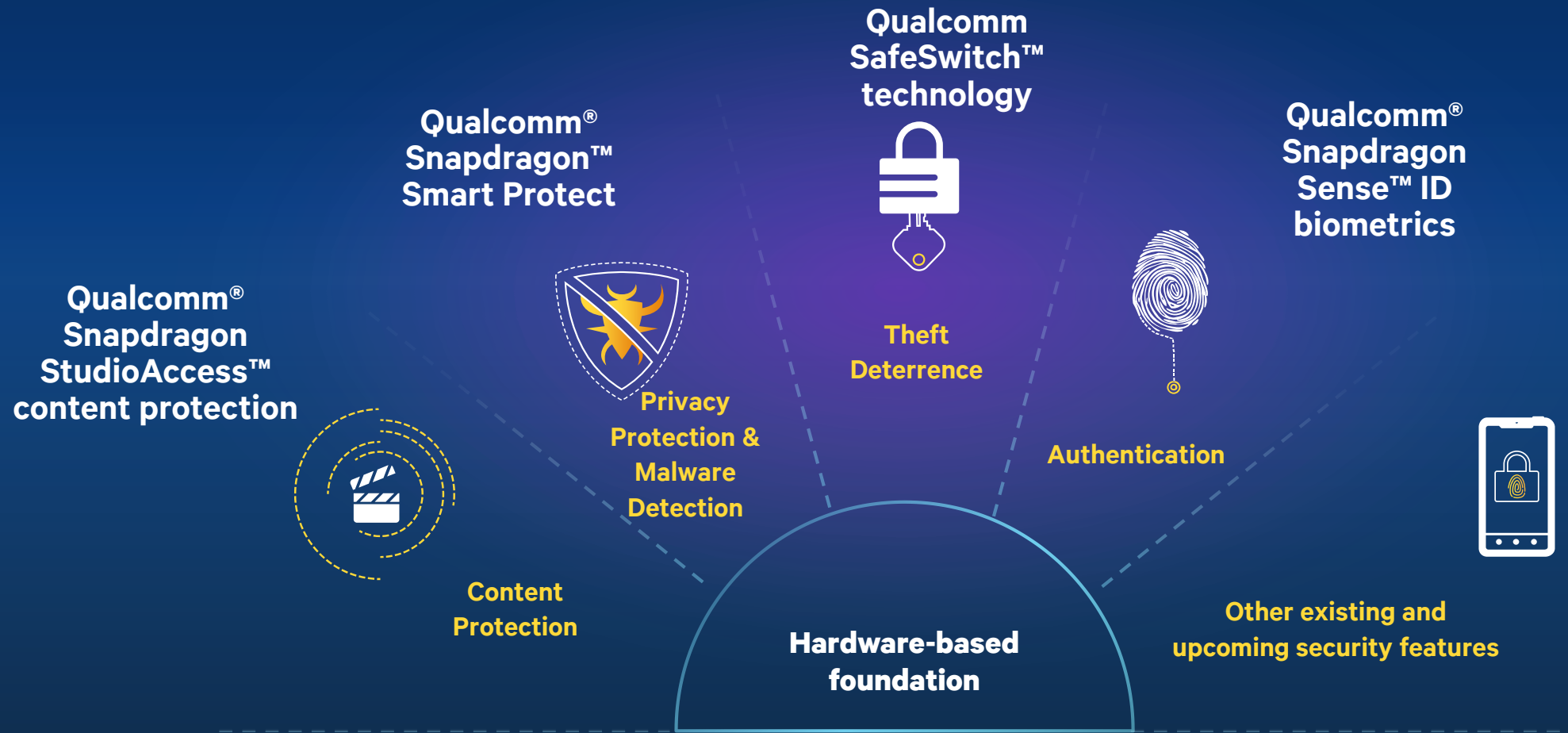
Mobile Security vision & Qualcomm Solution

Providing preemptive protection and seamless authentication, while protecting user privacy



Qualcomm Haven Security Solution

Built on the foundation of SecureMSM Technology



SecureMSM technology

Hardware-based foundation for all Qualcomm Haven technologies

- Secure boot
- Secure debug
- Secure storage
- Secure key provisioning
- Hardware encryption & random number generator
- Hardware firewall
- Qualcomm® Secure Execution Environment

What it is

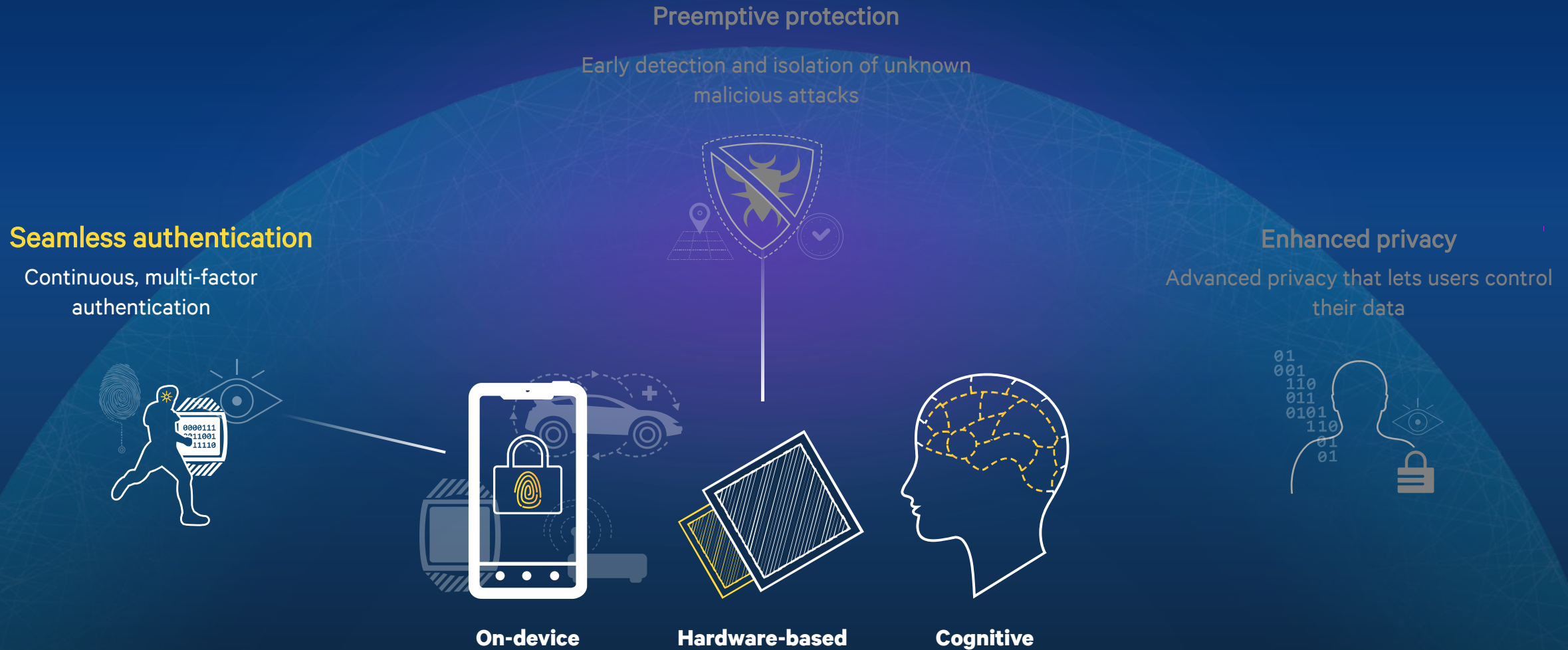
- The security foundation for devices powered by Qualcomm® Snapdragon™ processors and Snapdragon modems.
- Uniquely based on a powerful combination of hardware and software

Benefits

- Designed to provide a high level of security and robustness, while maintaining high performance and power efficiency

A vision for seamless and preemptive security

Enhancing security and privacy, while providing convenient user experience



Snapdragon Sense ID 3D fingerprint technology

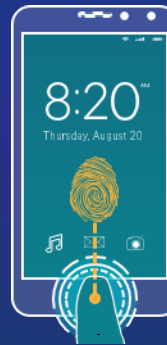
An industry leader with new capabilities

Stronger Material Penetration



Even stronger ultrasonics penetrate through thicker metal (up to 400 μm) and cover glass (up to 400 μm), allowing for more design options

Authentication on Wake-up



Placing the ultrasonic sensor under the cover glass at the home/wake-up touch point allows for convenient, frequent and secure authentication

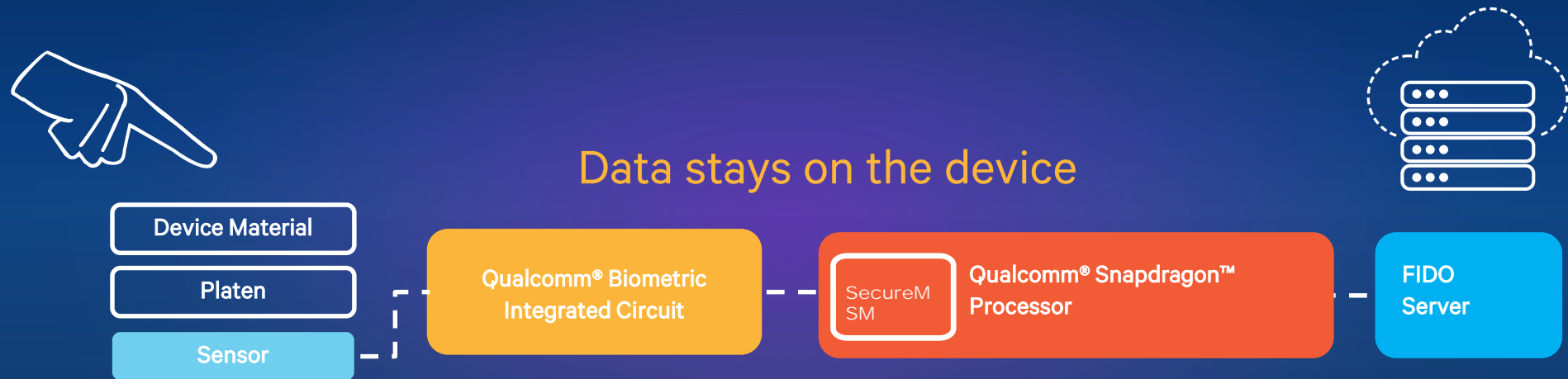
Liveness Detection



Ultrasonic verify that an actual finger is being used for authentication

Snapdragon Sense ID 3D fingerprint technology

The mobile industry's first end-to-end ultrasonic-based biometrics solution



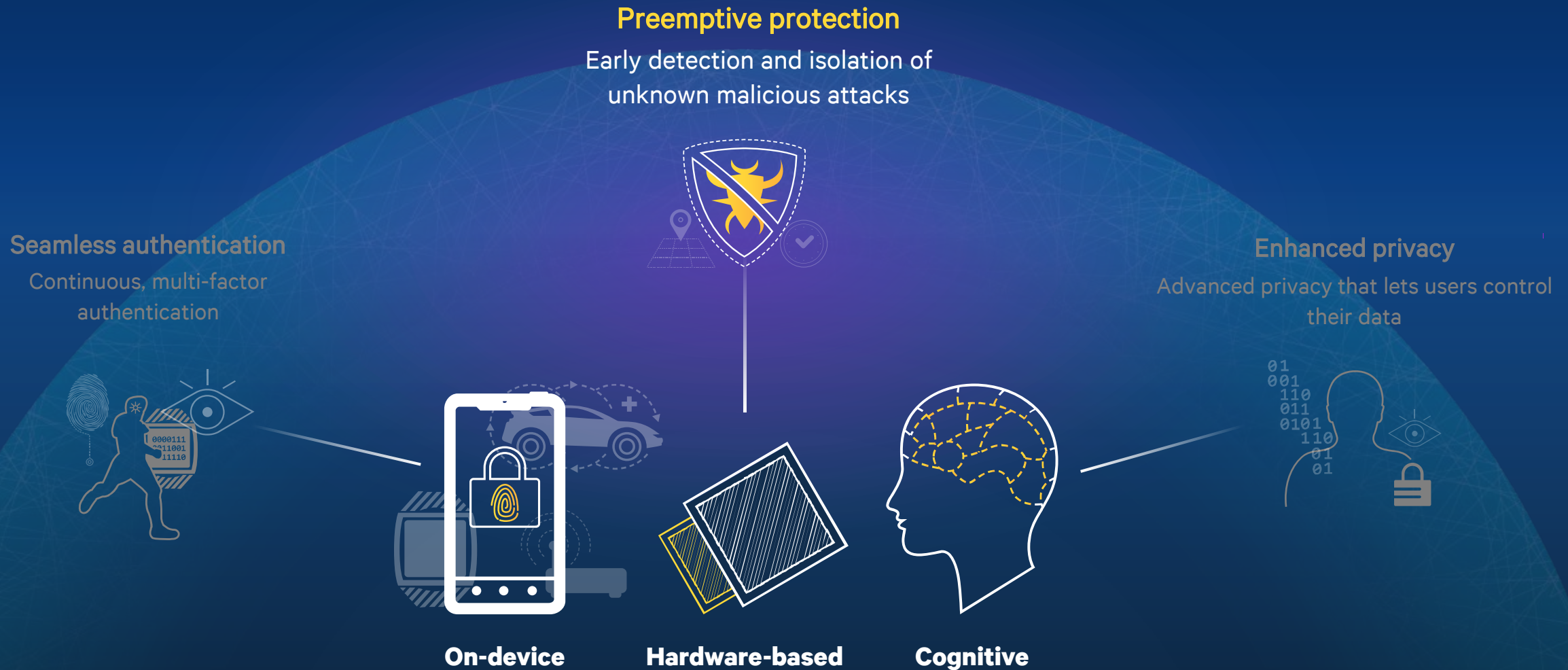
Captures three-dimensional acoustic detail within the outer layers of skin

Superior imaging detail for accurate detection of unique fingerprint characteristics

Less likely to be spoofed than capacitive-based sensors

A vision for seamless and preemptive security

Enhancing security and privacy, while providing convenient user experience



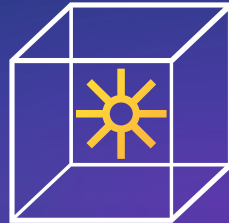
Providing preemptive protection from zero-day malware

Protecting users before they see an issue



Detection

- System-wide behavioral analysis
- Detection of rootkits



Blocking

- Block malicious activities



Removal

- Uninstall malware

Zero-day protection

Snapdragon Smart Protect - Behavioral analysis complements signature-based detection

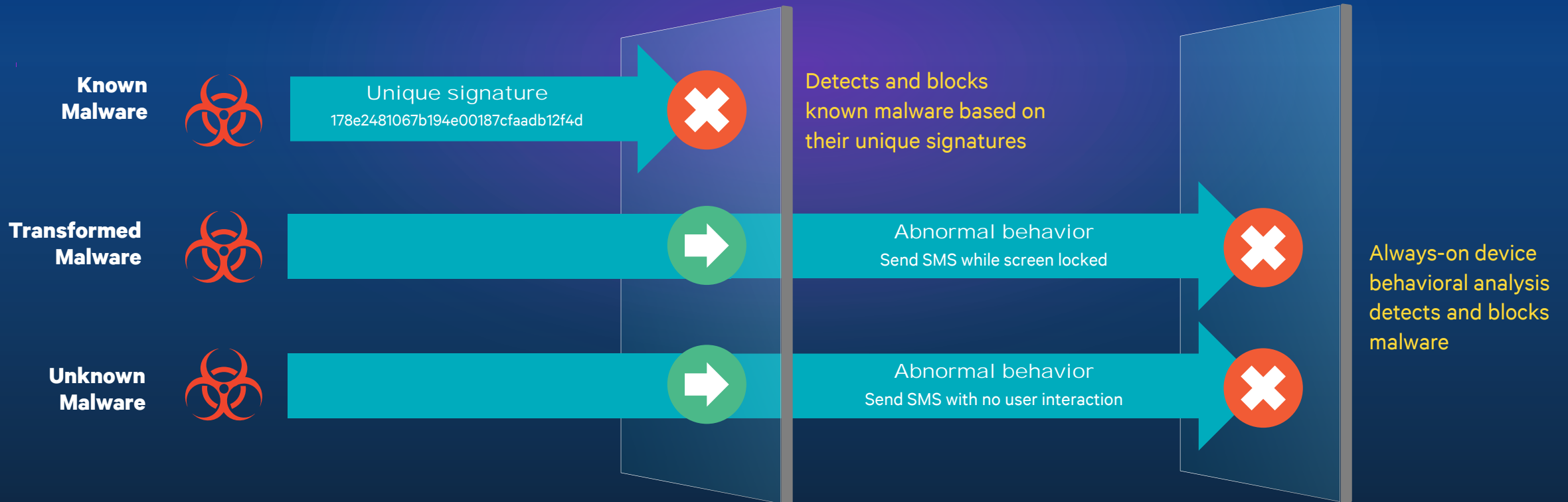
Malware attack

Signature-based detection

Behavioral-based detection

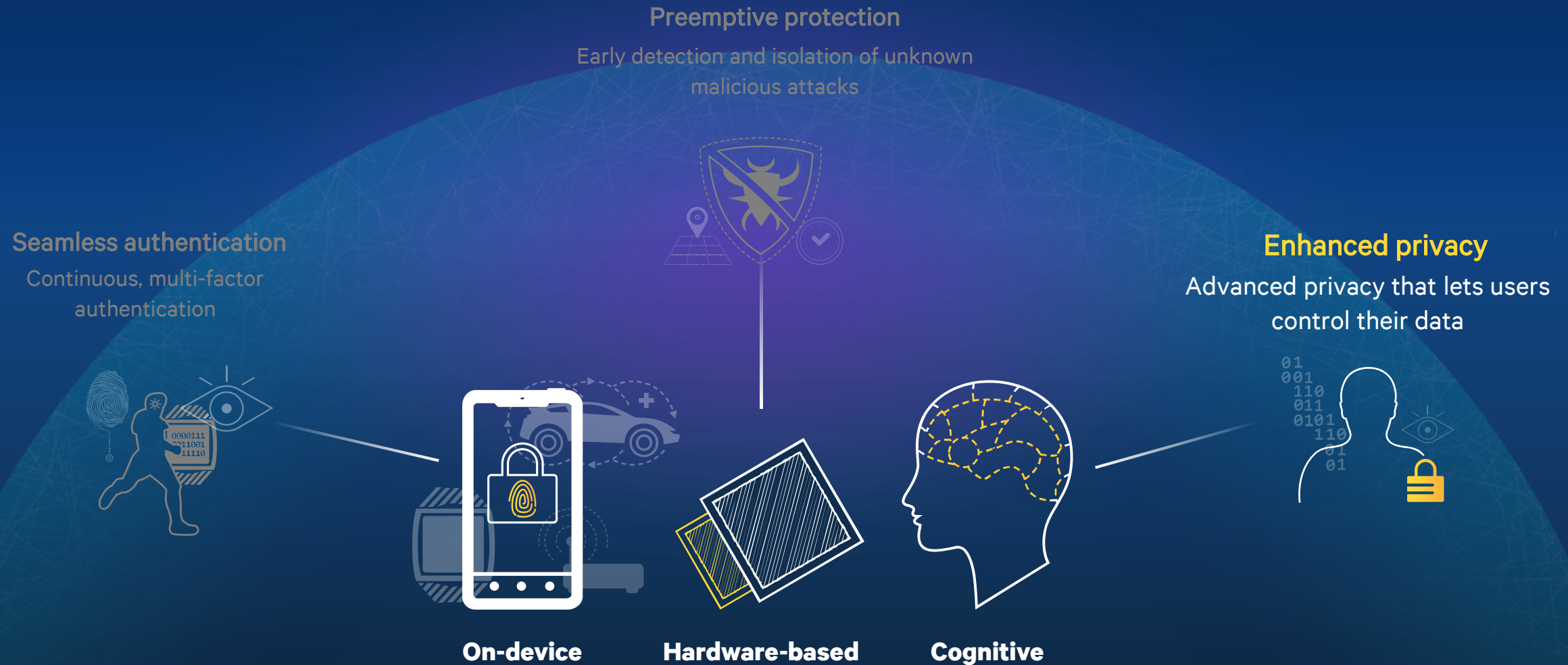
Searches for a known virus identity or signature

Searches for suspicious or anomalous software activity



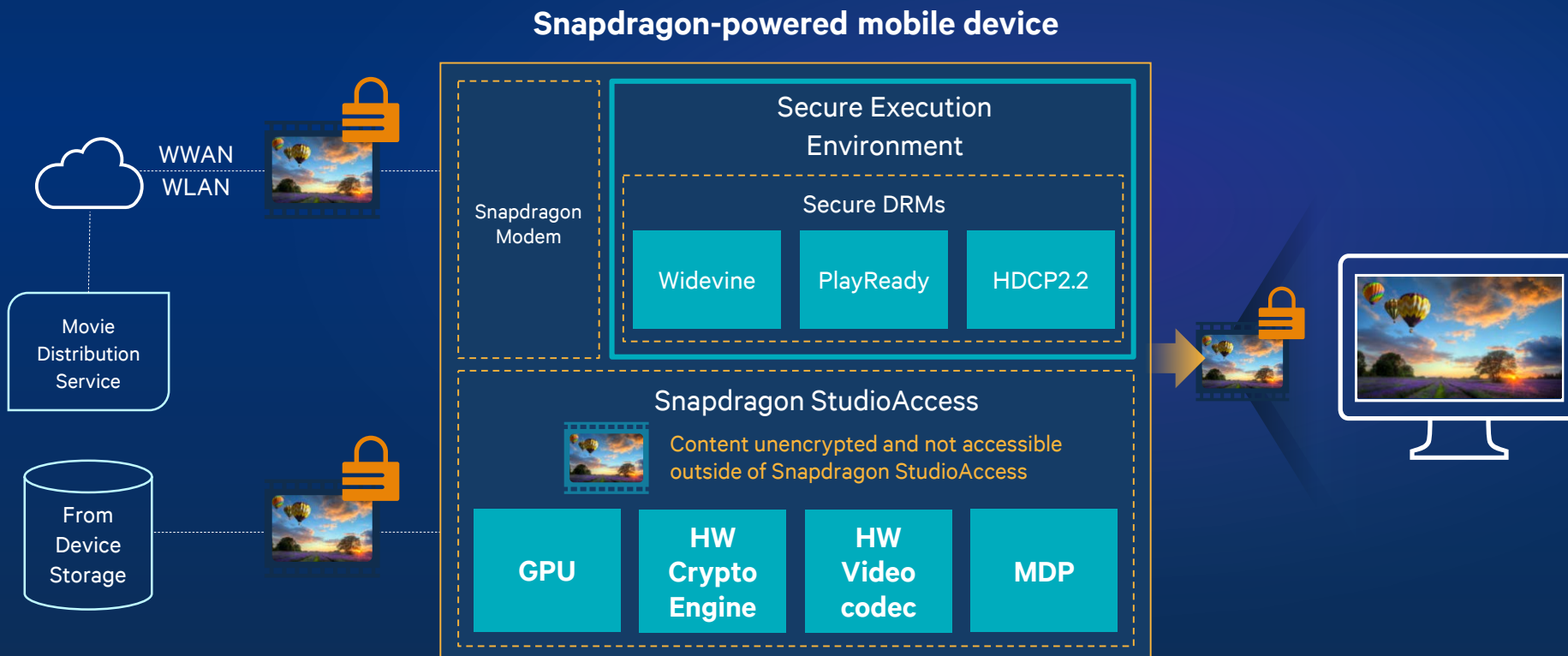
A vision for seamless and preemptive security

Enhancing security and privacy, while providing convenient user experience



Snapdragon StudioAccess content protection

Comprehensive content security



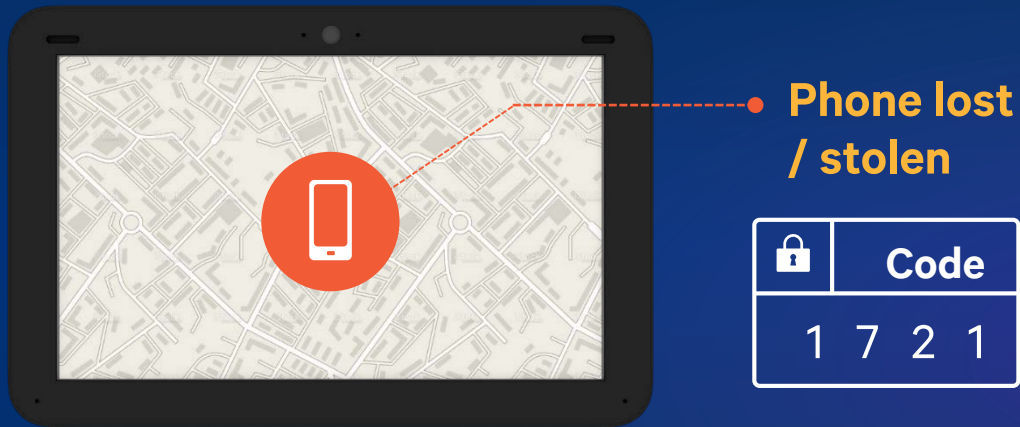
What it is

- Utilizes SecureMSM foundation to support comprehensive protection of premium video content
- Supports popular industry DRM (digital rights management) solutions
- Recognized by major Hollywood film studios

Benefits

- Users of Snapdragon powered devices can enjoy the latest premium studio content, at up to 4K Ultra HD resolution*

Qualcomm SafeSwitch technology



What it is

- Technology that helps enable users to remotely disable their mobile devices if they're lost or stolen and re-enable them if they're found
- Includes hardware SIM Lock to disable connectivity if owner's SIM is removed



Benefits

- Designed to help prevent device theft and protect user data and privacy
- Built to confirm that device lock requests are coming from a trustworthy source, decreasing the likelihood of malicious device lock attacks



Conclusion

Qualcomm Technologies security leadership

By building on its hardware-based foundation, Qualcomm has been offering proven security solutions for billions of devices since 2008



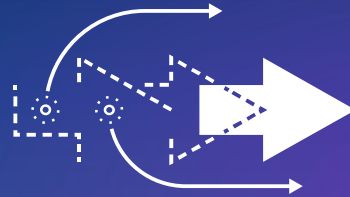
Qualcomm Technologies security leadership

Uniquely positioned to address security issues



Industry traction

- Qualcomm security powers billions of devices



History of success

- Qualcomm® Snapdragon SecureMSM™ technology first introduced 2008
- 1st to receive Common Criteria's Mobile Device Fundamentals Protection Profile (MDFPP) certification



Holistic system approach

- End-to-end solutions
- Hardware-based security foundation
- Custom hardware engines and integrated software

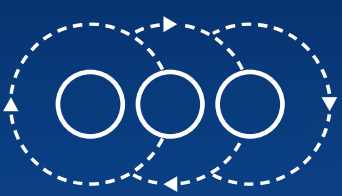


Ecosystem support

- Active participants in many open standards
- Working with leading security application providers

Qualcomm to offer broad ecosystem support

Driving end-to-end security solutions through collaboration and support



Industry organizations

- FIDO
- SCSA
- GlobalPlatform
- Trusted Computing Group
- W3C



Public policies

- Certification (e.g. Common Criteria, FIPS 140-2)
- Data protection and privacy regulations (e.g. HIPPA)
- Phone theft, fraud (e.g. Kill Switch)
- Cybersecurity



Software and services

- Open standards
- Provisioning and signing services
- Software development kits
- Trusted execution environment porting kits



OEM and operator support

- Manage unique keys per device
- Key provisioning and services
- Sensor porting kits



Ecosystem partners

- Studios
- Financial institutions
- Enterprise services
- Public sector (e.g. healthcare)
- Distributors



Thank you

Follow us on:  

For more information on Qualcomm, visit us at:
www.qualcomm.com & www.qualcomm.com/blog

Qualcomm is a trademark of Qualcomm Incorporated, registered in the United States and other countries.
Other products and brand names may be trademarks or registered trademarks of their respective owners

